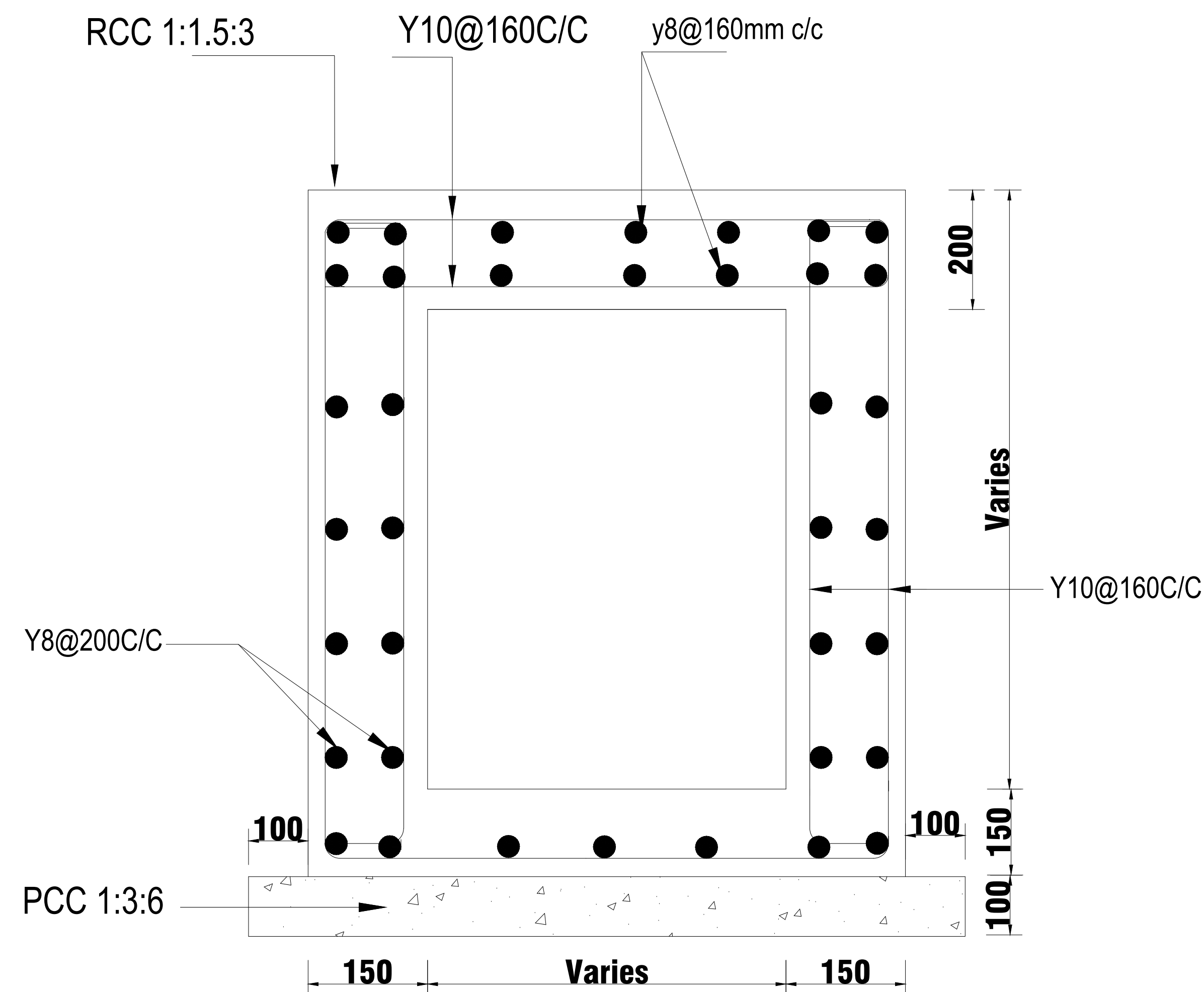
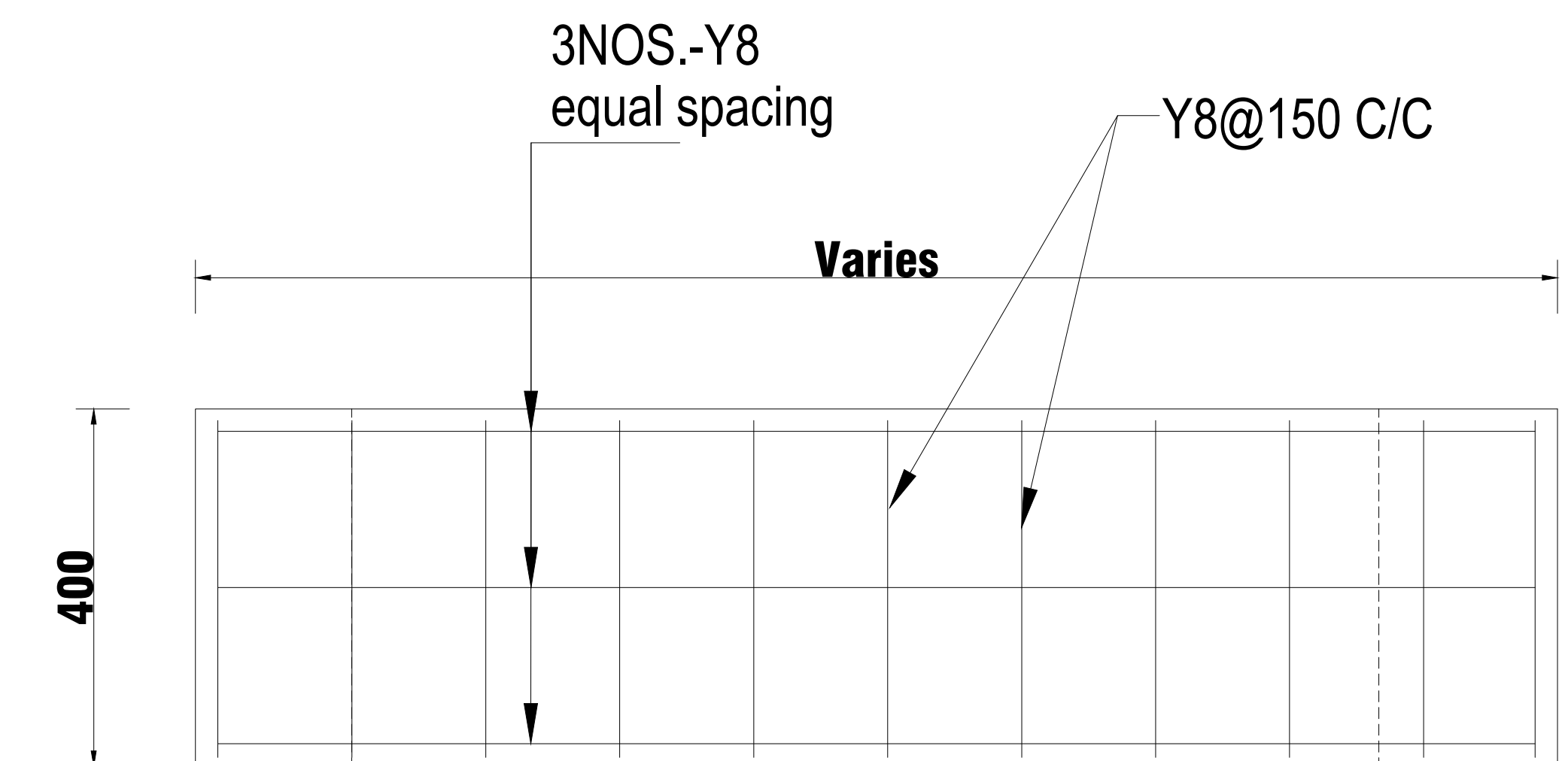


RCC DRAIN

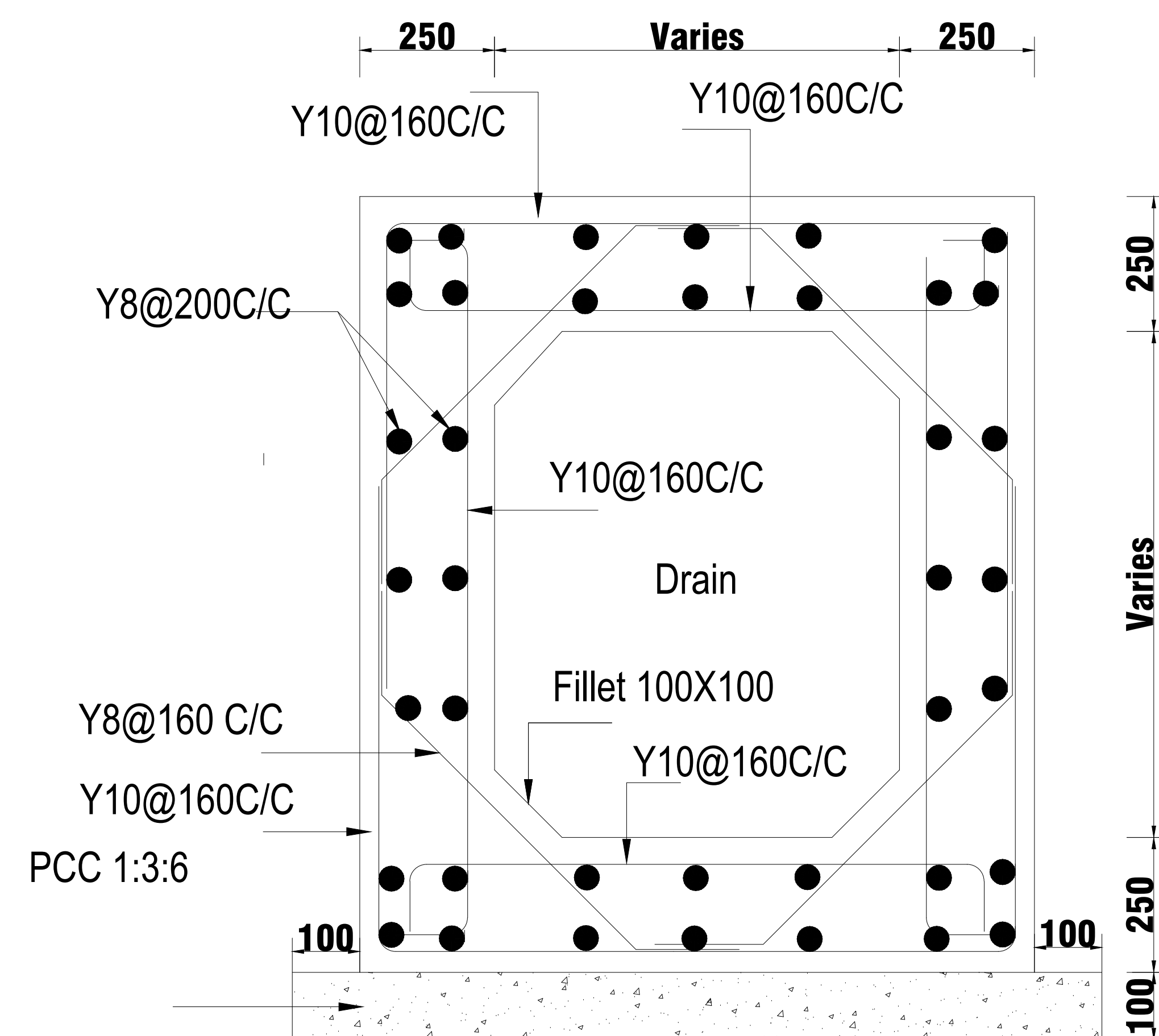


LOCATIONS

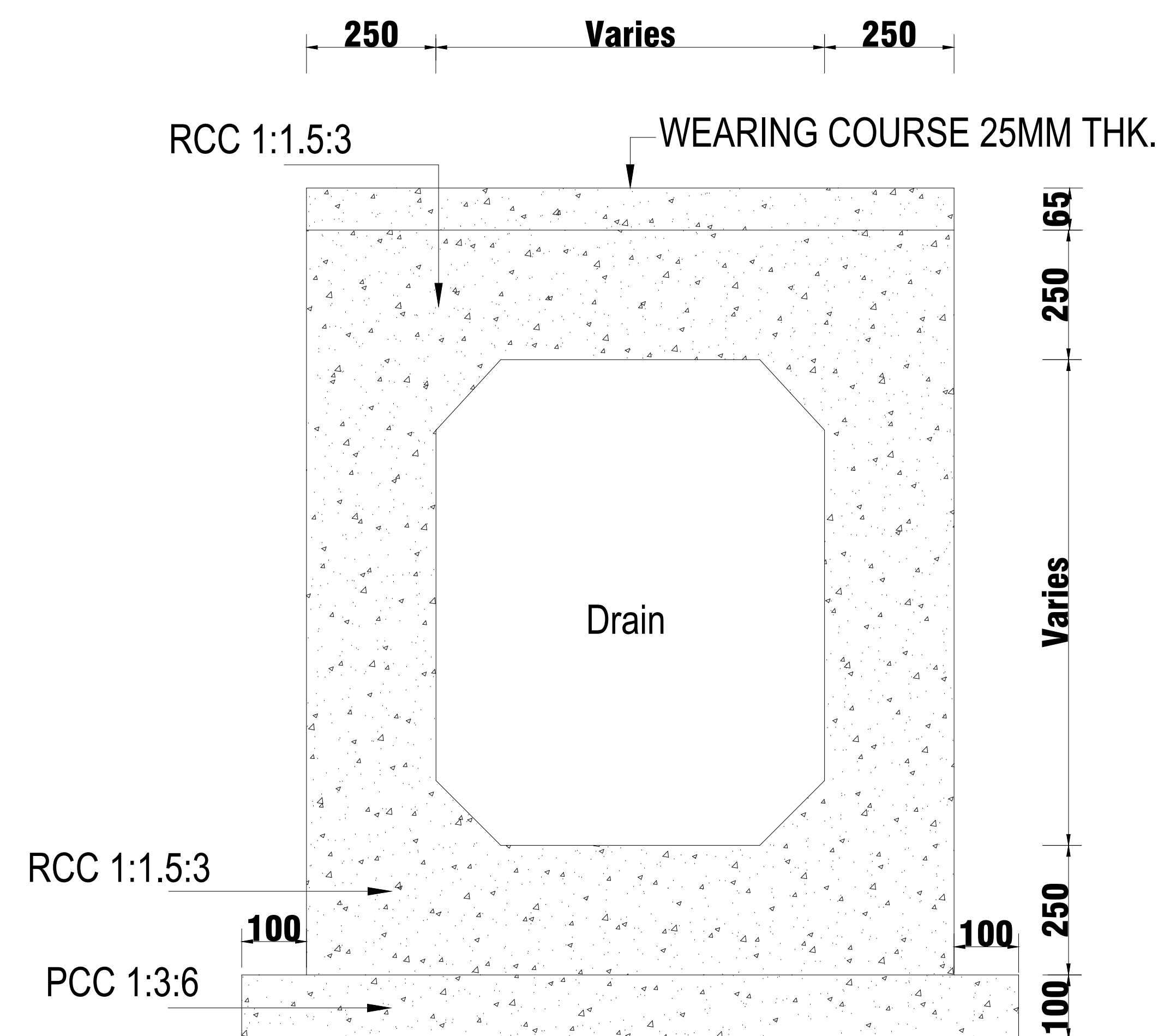
RCC DRAIN AT PLOT ENTRY



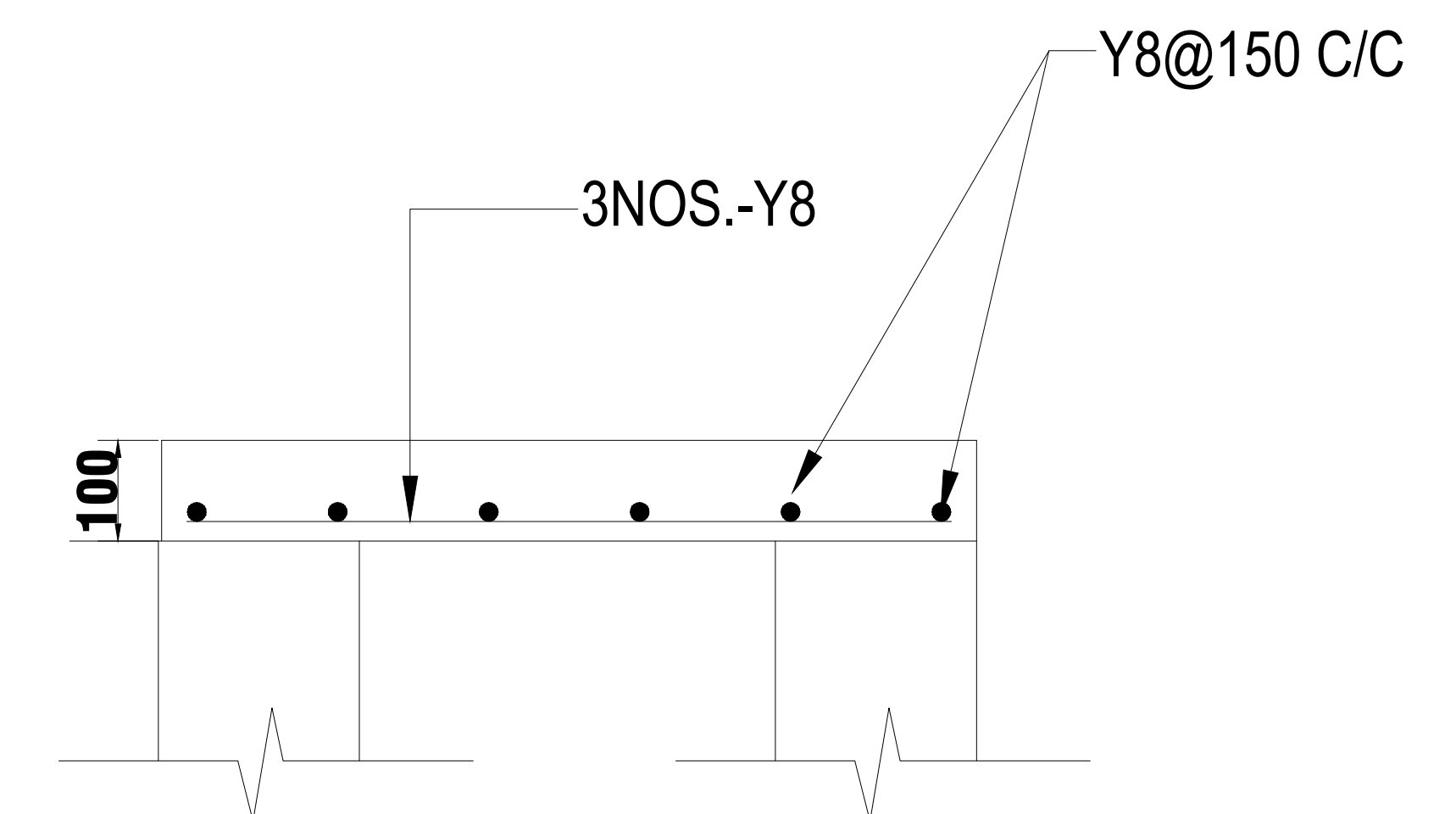
ARRANGEMENT & RC DETAILS OF PRECAST SLAB



REINFORCEMENT DETAILS



GENERAL ARRANGEMENT DETAILS



CROSS SECTION OF PRECAST SLAB

DRAIN AT CULVERT LOCATIONS

LEGEND

NOTES
1. Pre-cast cover slab to be provided on the Drain for every 10mt interval for a 2 mt length each of a maximum width of 1 slab is around 0.40 mt.
2. Drain cover slab top level to be matched with the Road level at every Plot entry locations.
3. For invert level and size of drain, please refer Network Layout with Calculation sheet.
4. Provide holes in cover slab at plot entries to facilitate to drain the water.

NOTES
This Drawing is the property of IL&FS CDI Ltd and is not to be produced, copied or handed over to a third party or used for any purpose other than for which it is meant
SCALE
NTS

DRAWING DETAILS	
<u>Designed</u>	<u>Date</u> 30.08.17
<u>Drawn</u>	<u>Sheet Size</u> A3
<u>Checked/ Approved</u>	

Employer	HLL MEDIPARK LIMITED
Drawing Title	TYPICAL STORM WATER DRAIN CS
Drawing Number	ICDI/HML/2017/SWD-CS/001
Rev	00

Technical Consultants	IL&FS Clusters
Project Development & Advisory	IL&FS Clusters
	IL&FS Cluster Development Initiative Limited

FOR TENDER